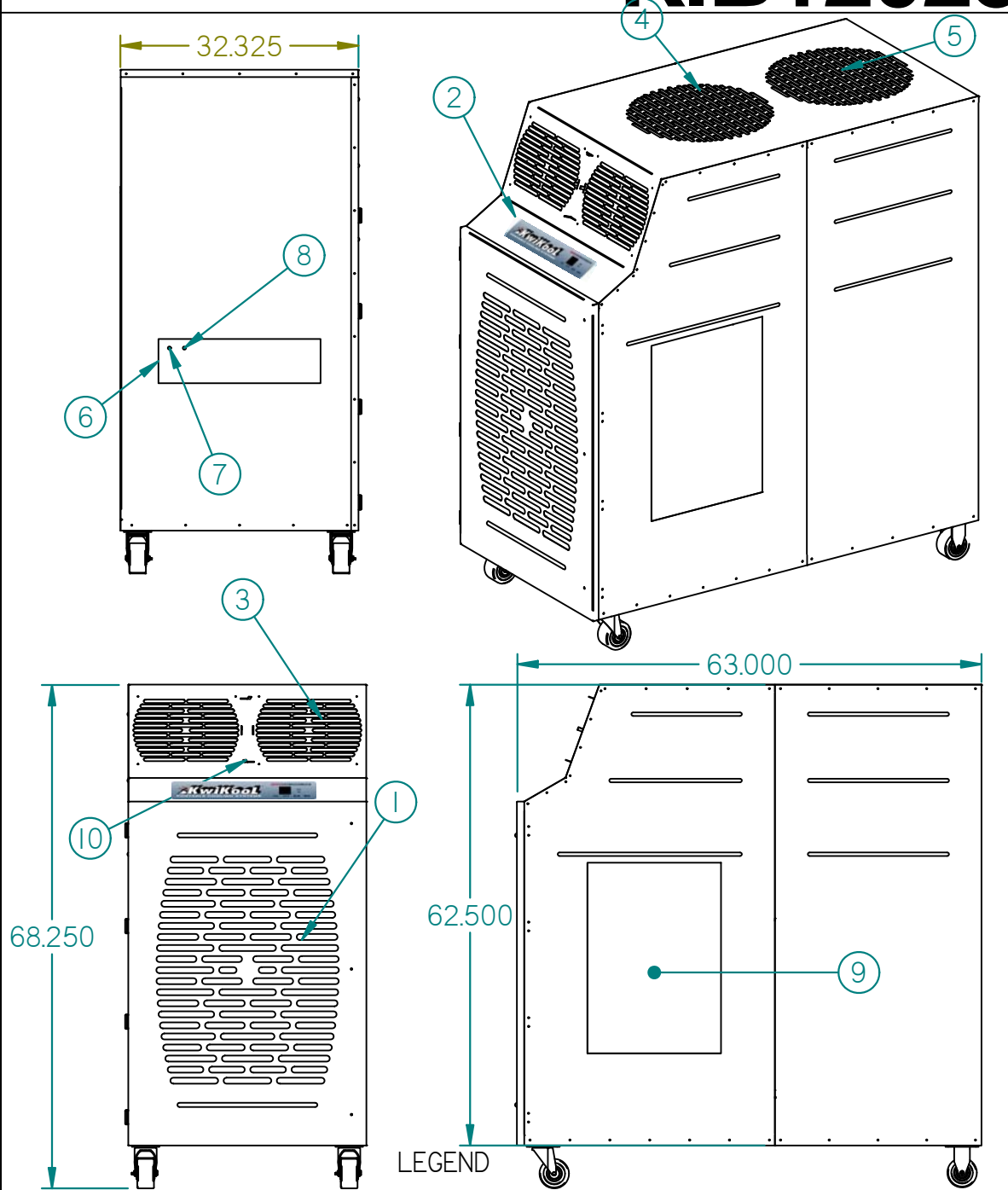


KIB12023



LEGEND

- | | |
|------------------------|-------------------------|
| 1 Cold Air Return | 6 Power Cord |
| 2 Control Pad | 7 Condensate Nipple |
| 3 Cold Air Supply | 8 Condensate Alarm Jack |
| 4 Condenser Air Inlet | 9 Access Door |
| 5 Condenser Air Outlet | 10 Vent Control |



SPECIFICATIONS

KIB12023 - 10 Ton

COOLING CAPACITY		
	BTU/hr @ 95F at 60% RH	120,000 (10 Tons)
COMPRESSOR DATA		
	Compressor Type	Hermetic Recip./2 Stage
	Operating Temperatures	60-110 F 50%RH
	Refrigerant	407C
FAN DATA		
Evaporator		
	Fan Type (Centrifugal)	Belt Drive
	Air Flow (CFM)	1800/3800
	Supply Air Device	Adjustable Vent
	Supply Air Chute Data (optional)	2 - 12" Dia. x 30" Length
	Supply Air Chute Max. Length	50'
Condenser		
	I/O Integral Condenser	Balanced Air Flow
	Fan Type (Centrifugal)	Belt Drive
	Air Flow (CFM)	5000
	Condenser Duct Specs (optional)	2 - 20" Dia. x 8' Length
	Condenser Duct Max. Length	85'
	VSD - Variable Speed Drive	5 HP
ELECTRICAL DATA		
	Power Supply (Volts)	208/230 3-Phase
	Current Consumption (Amps)	64.8
	Power Consumption (Watts)	15
	Maximum Circuit Breaker (Amps)	80
	Minimum Circuit Capacity (Amps)	69.7
	Min./Max. Voltage	195-225/210-250
	Power Cord Gauge/Length	6 AWG/10'
	Plug Configuration	Field Supplied
DIMENSIONAL DATA		
	Width x Depth x Height (Inches)	32.325" x 63" x 68.25"
	Weight (Lbs.)	1075
	Shipping Weight (Lbs.)	1200
	Ceiling Kit Weight (Lbs.)	56
	Shipping Weight w/ Ceiling Kit	1271
SAFETY DEVICE DATA		
	Compressor Overload	Internal
	Fan Motor Overload	Automatic Internal
	Evaporator Freeze Protection	Hot Gas Bypass
	High Pressure Switch	Manual
	Low Pressure Switch	Automatic
	Compressor Short Cycle	Yes
	Automatic Restart	Yes
	Thermostat Type	Microprocessor/Digital
	Condensate Pump Overflow	Yes
	Condensate Tank Overflow	Yes

1-800-KWIKOOL